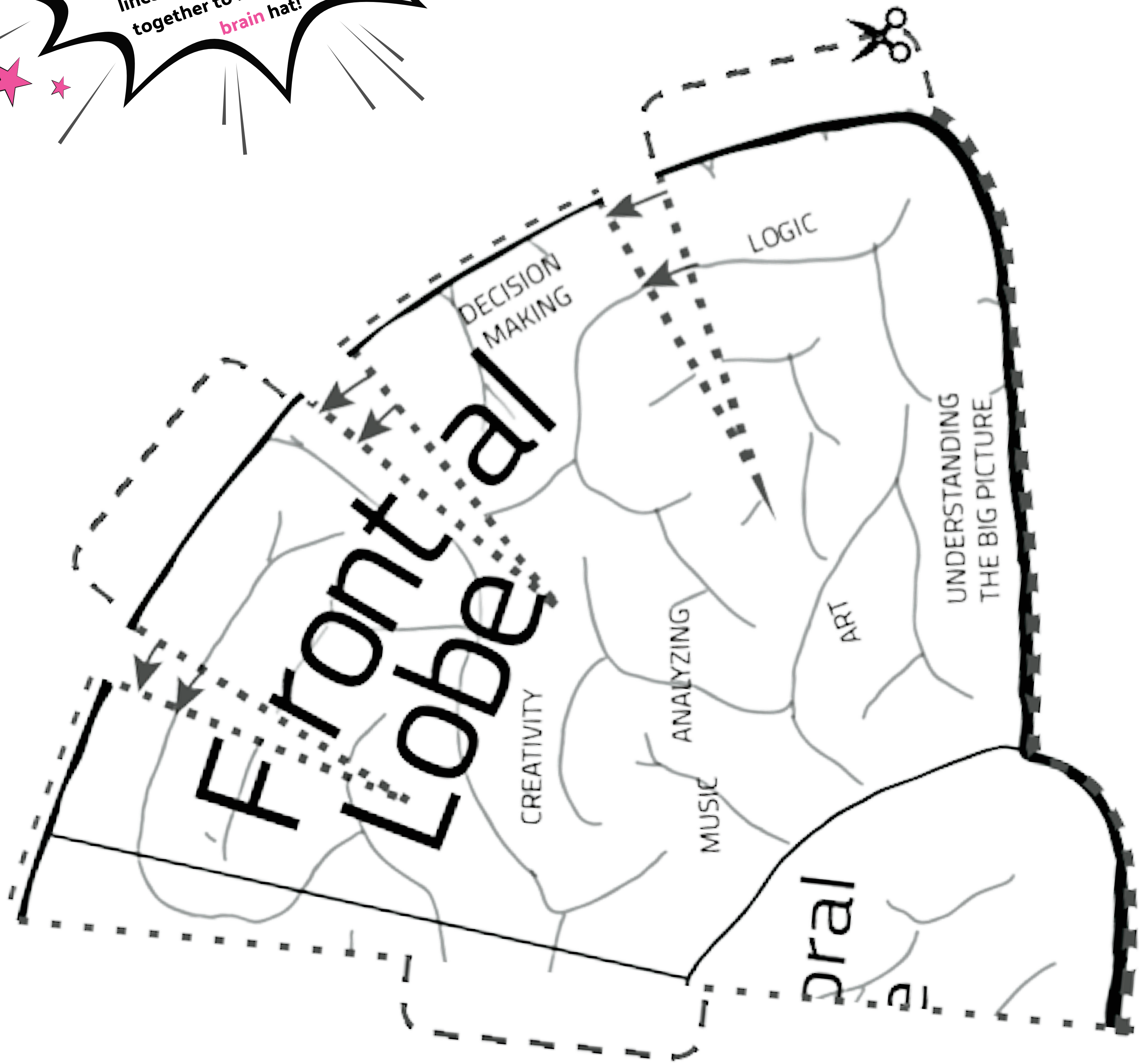


# BUILD-A-BRAIN RIGHT SIDE

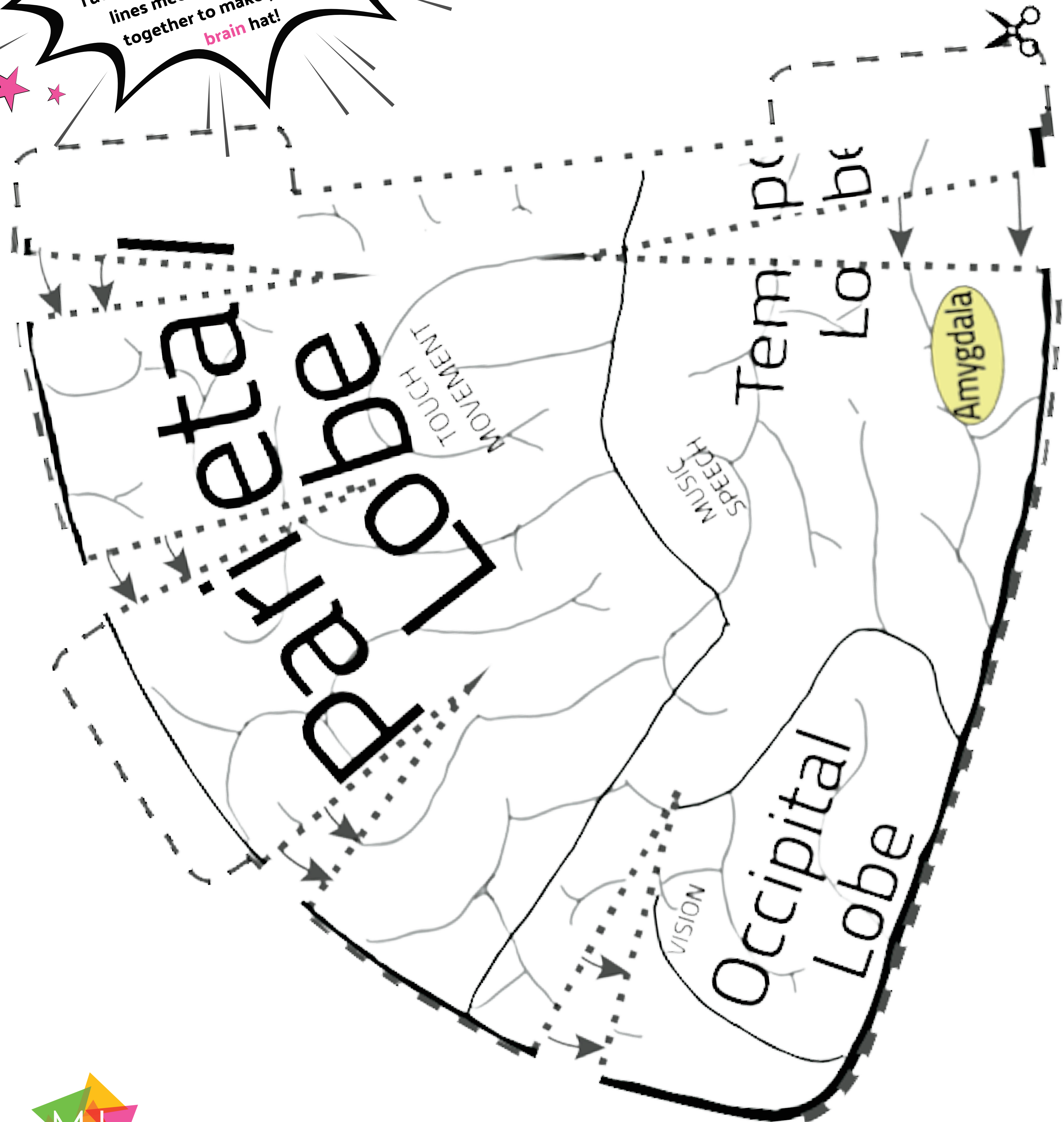
Colour the **brain** lobes.  
Cut around the outside.  
Cut along the dashed lines  
(where the arrows are pointing to).  
Tuck the flaps & tabs so the dashed  
lines meet. Glue or tape them  
together to make your own  
**brain** hat!





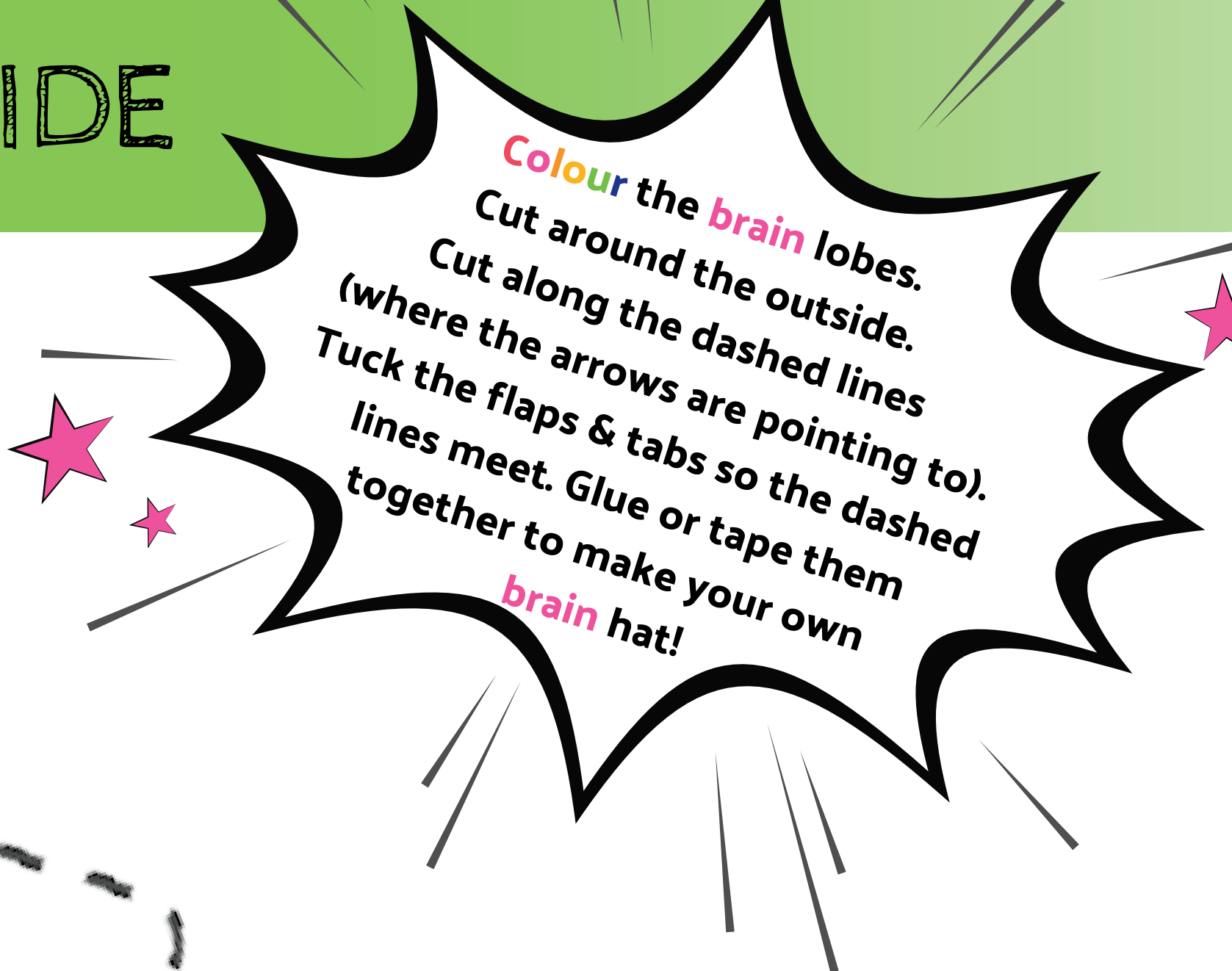
# BUILD-A-BRAIN RIGHT SIDE

Colour the **brain** lobes.  
Cut around the outside.  
Cut along the dashed lines  
(where the arrows are pointing to).  
Tuck the flaps & tabs so the dashed  
lines meet. Glue or tape them  
together to make your own  
**brain** hat!



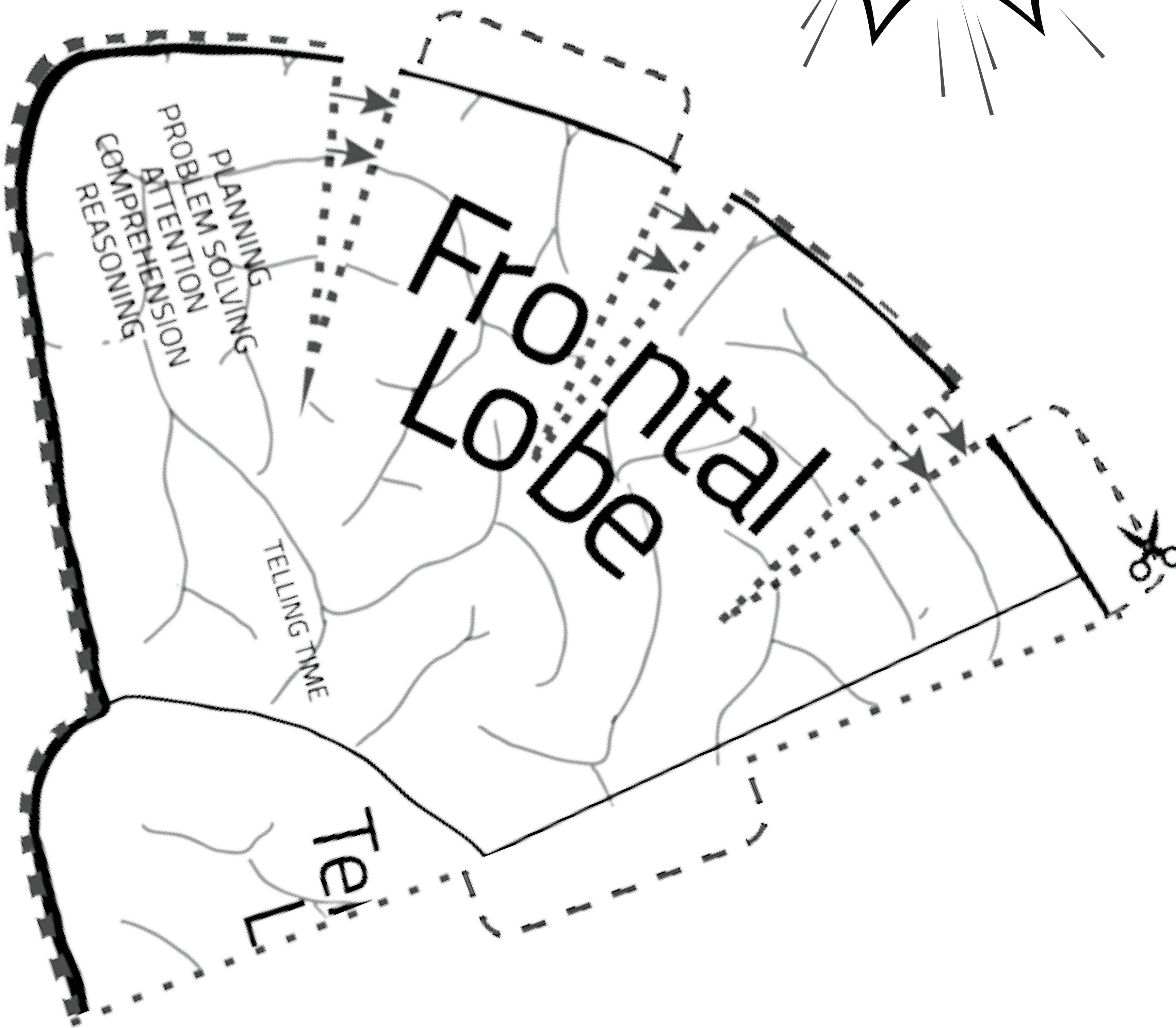


# BUILD-A-BRAIN LEFT SIDE



IDE

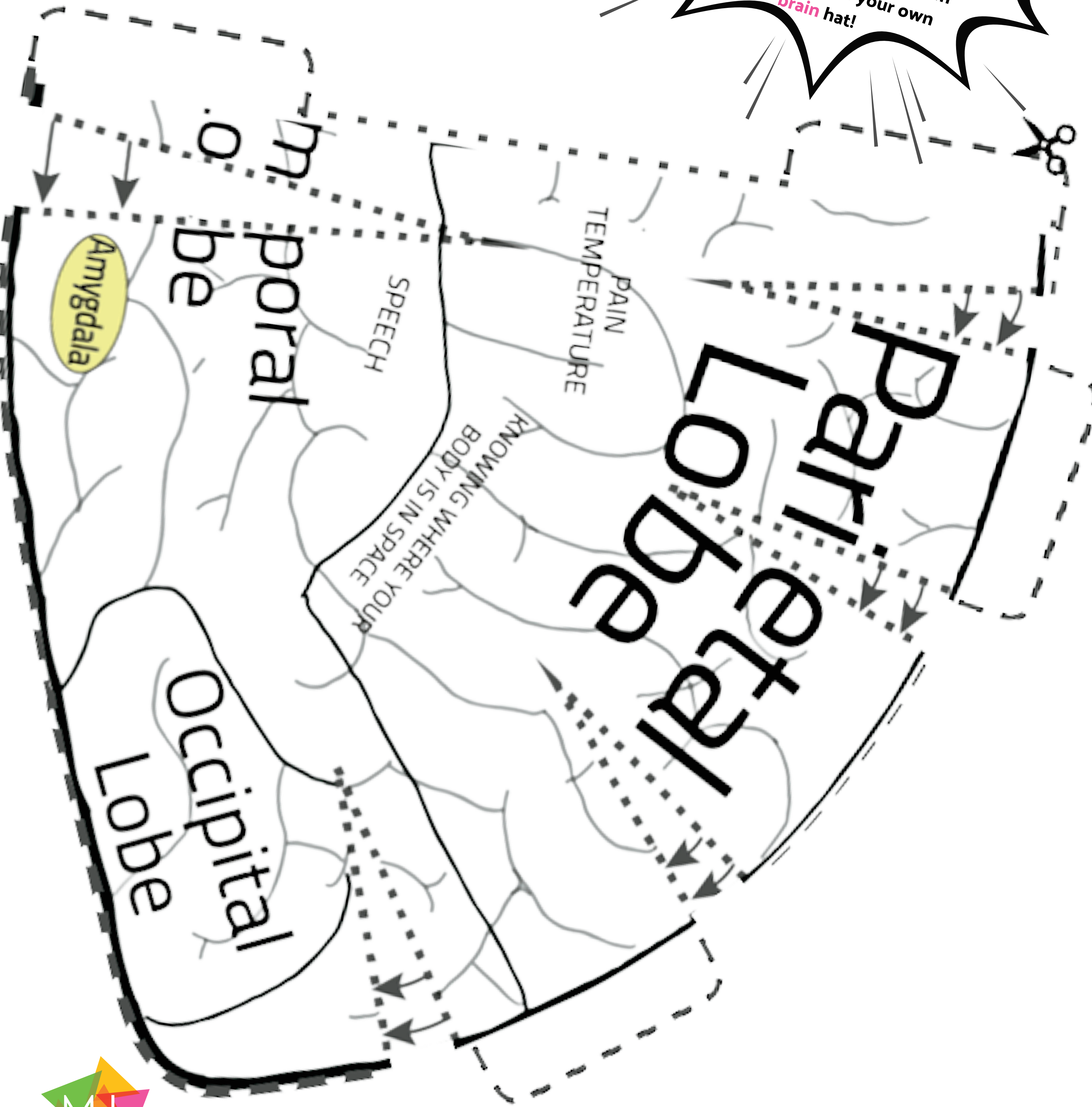
Colour the **brain** lobes.  
Cut around the outside.  
Cut along the dashed lines  
(where the arrows are pointing to).  
Tuck the flaps & tabs so the dashed  
lines meet. Glue or tape them  
together to make your own  
**brain** hat!





BUILD-A-BRAIN LEFT SIDE

Colour the brain lobes.  
Cut around the outside.  
Cut along the dashed lines  
(where the arrows are pointing to).  
Tuck the flaps & tabs so the dashed  
lines meet. Glue or tape them  
together to make your own  
brain hat!





# GROW A BRAIN

Create your own example of how your **brain grows** and **develops** new skills!



As a baby

As a kid

As an adult

A large, empty rectangular box with a thick blue border, intended for a drawing or writing related to the 'As a baby' stage.A large, empty rectangular box with a thick orange border, intended for a drawing or writing related to the 'As a kid' stage.A large, empty rectangular box with a thick pink border, intended for a drawing or writing related to the 'As an adult' stage.

---

---

---

---

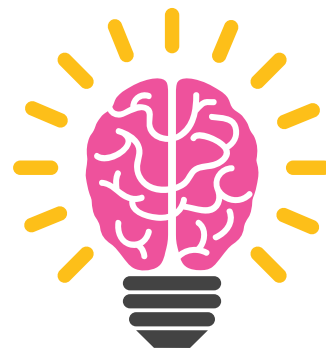
---

---

---

---

---



Remember:

our **brain** and **body** are connected. Our brain grows and changes over time.

